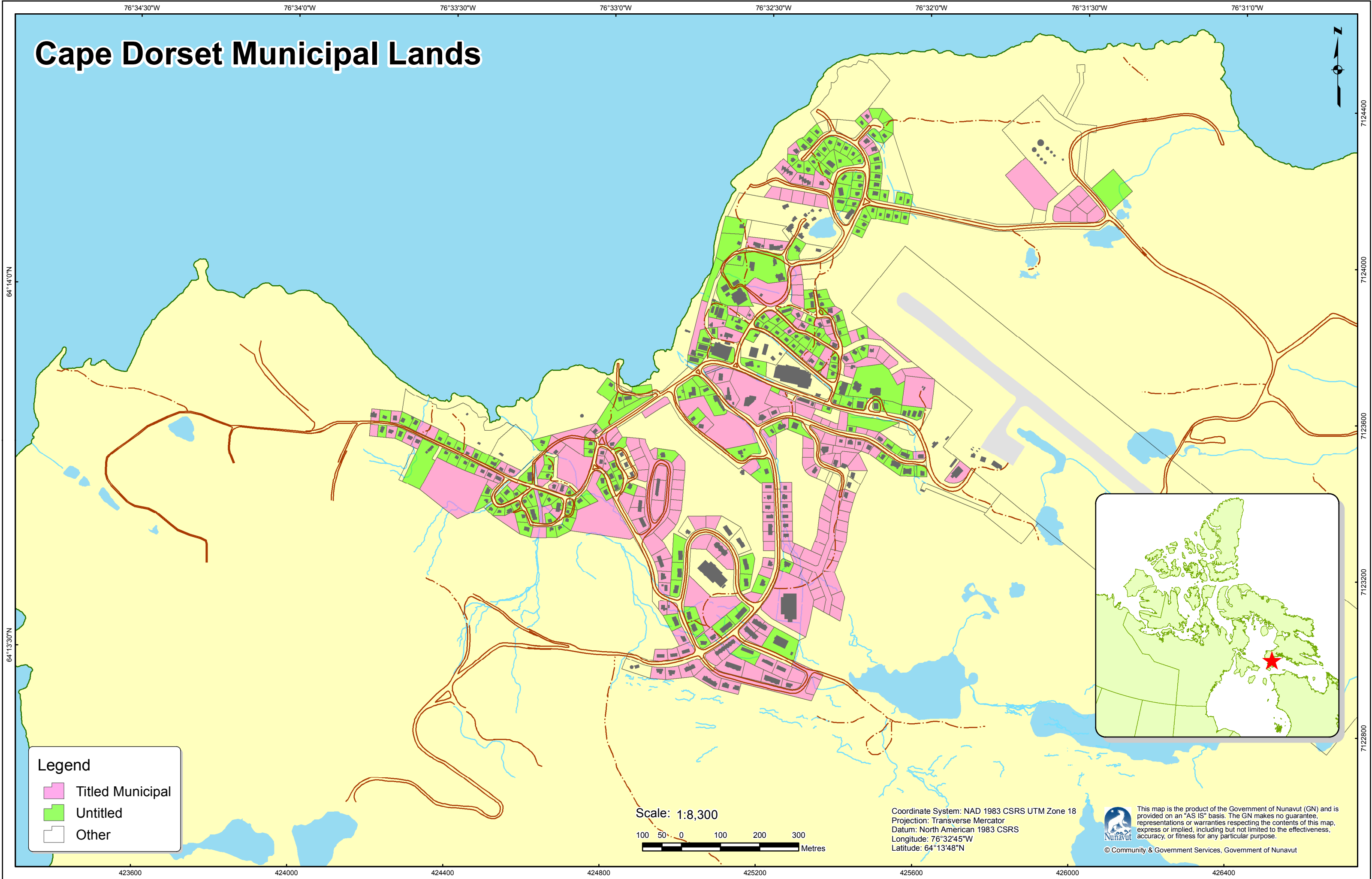


Cape Dorset Municipal Lands



64°14'0"N

64°13'30"N

76°34'30"W 76°34'0"W 76°33'30"W 76°33'0"W 76°32'30"W 76°32'0"W 76°31'30"W 76°31'0"W

7124400

7124000




7123600

7123200

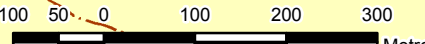
7122800

423600 424000 424400 424800 425200 425600 426000 426400

Legend

-  Titled Municipal
-  Untitled
-  Other


Scale: 1:8,300



100 50 0 100 200 300 Metres

Coordinate System: NAD 1983 CSRS UTM Zone 18
Projection: Transverse Mercator
Datum: North American 1983 CSRS
Longitude: 76°32'45"W
Latitude: 64°13'48"N



 This map is the product of the Government of Nunavut (GN) and is provided on an "AS IS" basis. The GN makes no guarantee, representations or warranties respecting the contents of this map, express or implied, including but not limited to the effectiveness, accuracy, or fitness for any particular purpose.
© Community & Government Services, Government of Nunavut