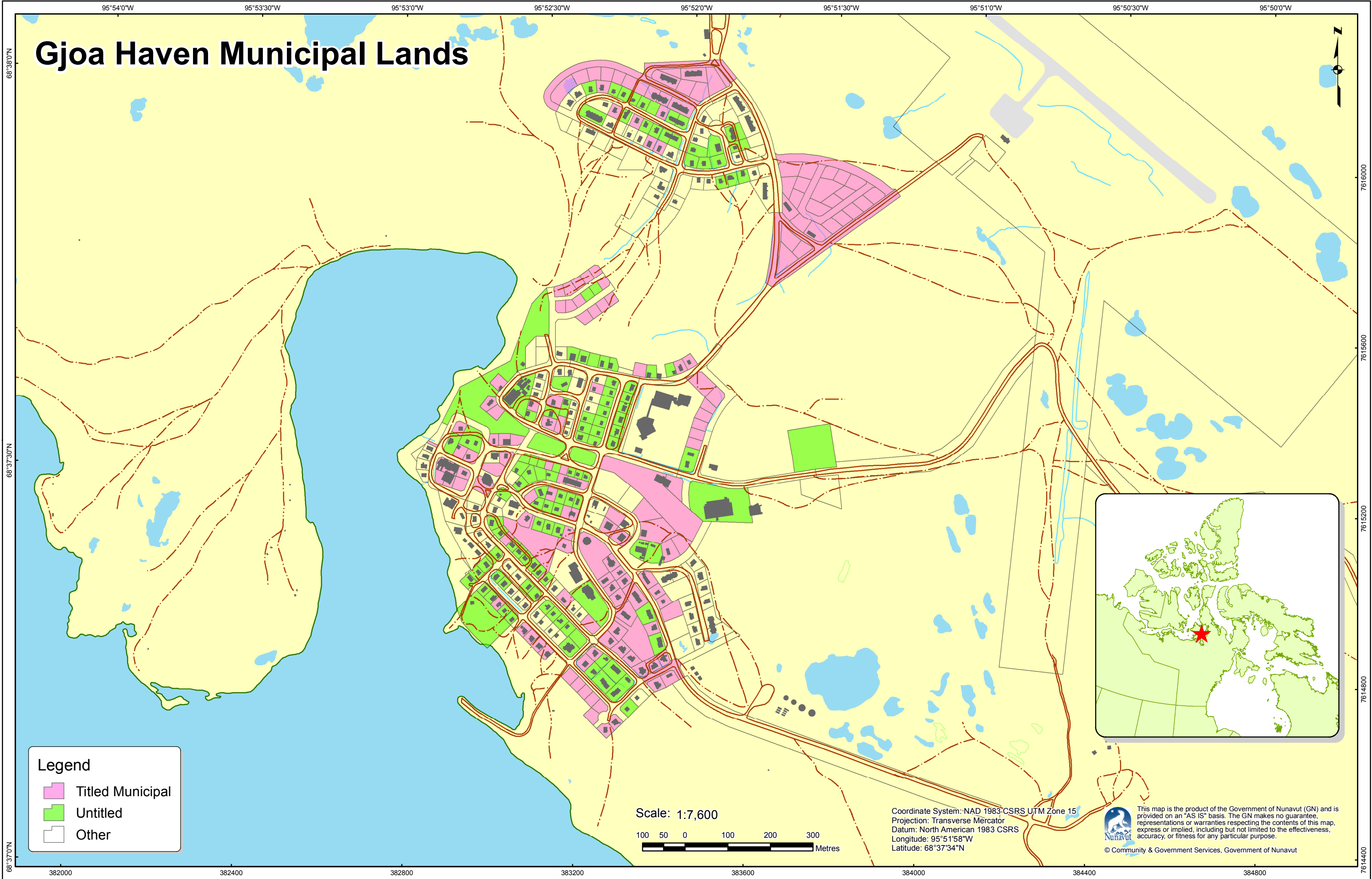


Gjoa Haven Municipal Lands



68°38'0"N
68°37'30"N
68°37'0"N

95°54'0"W 95°53'30"W 95°53'0"W 95°52'30"W 95°52'0"W 95°51'30"W 95°51'0"W 95°50'30"W 95°50'0"W

7616000
7615600
7615200
7614800
7614400

Legend

- Titled Municipal
- Untitled
- Other

Scale: 1:7,600

100 50 0 100 200 300 Metres

Coordinate System: NAD 1983 CSRS UTM Zone 15
Projection: Transverse Mercator
Datum: North American 1983 CSRS
Longitude: 95°51'58"W
Latitude: 68°37'34"N



This map is the product of the Government of Nunavut (GN) and is provided on an "AS IS" basis. The GN makes no guarantee, representations or warranties respecting the contents of this map, express or implied, including but not limited to the effectiveness, accuracy, or fitness for any particular purpose.
© Community & Government Services, Government of Nunavut

382000 382400 382800 383200 383600 384000 384400 384800