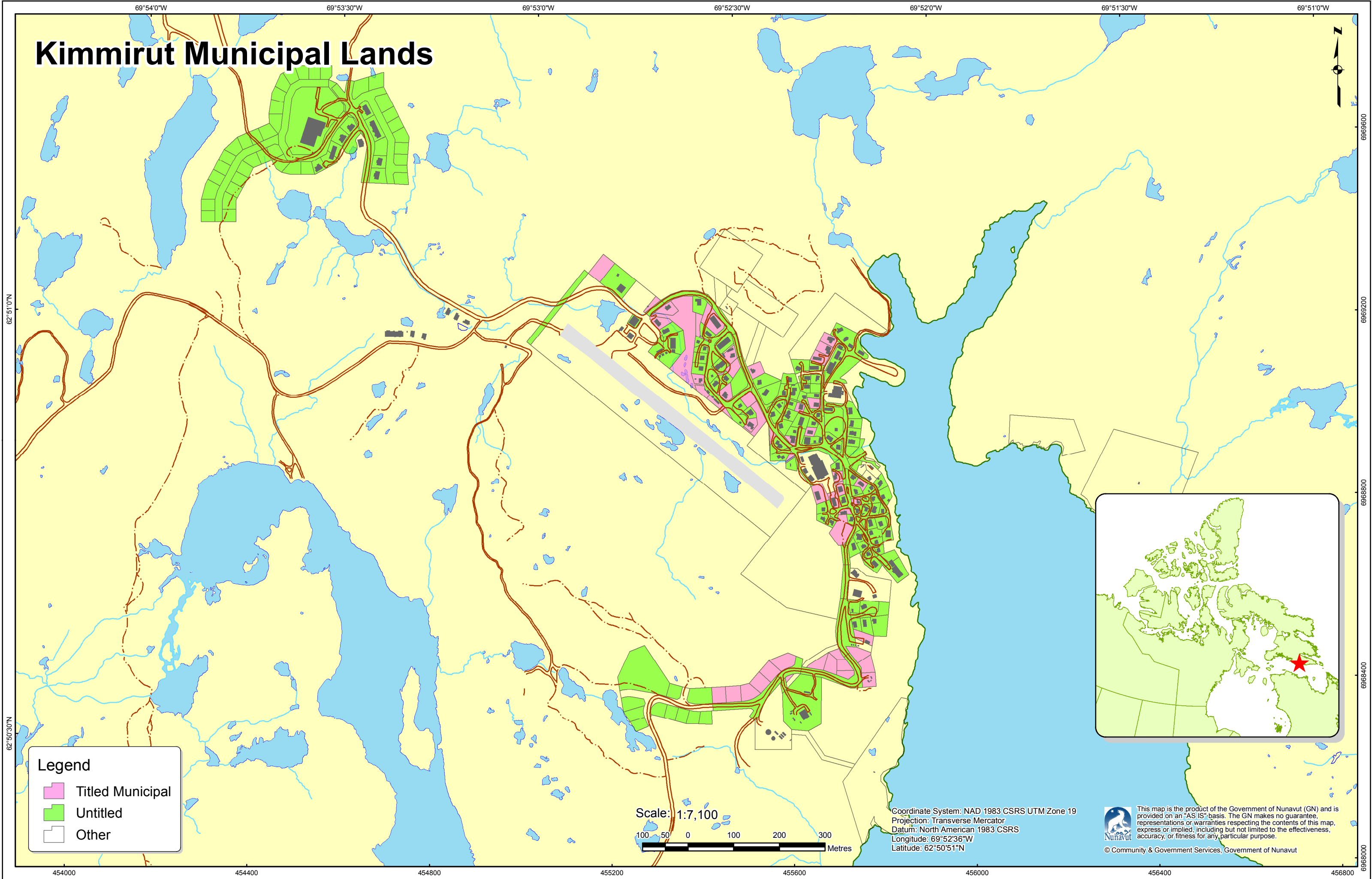


# Kimmirut Municipal Lands



69°54'0"W 69°53'30"W 69°53'0"W 69°52'30"W 69°52'0"W 69°51'30"W 69°51'0"W

62°51'0"N

62°50'30"N



**Legend**

- Titled Municipal
- Untitled
- Other

Scale: 1:7,100

100 50 0 100 200 300 Metres

Coordinate System: NAD 1983 CSRS UTM Zone 19  
Projection: Transverse Mercator  
Datum: North American 1983 CSRS  
Longitude: 69°52'36"W  
Latitude: 62°50'51"N



This map is the product of the Government of Nunavut (GN) and is provided on an "AS IS" basis. The GN makes no guarantee, representations or warranties respecting the contents of this map, express or implied, including but not limited to the effectiveness, accuracy, or fitness for any particular purpose.  
© Community & Government Services, Government of Nunavut

454000 454400 454800 455200 455600 456000 456400 456800

6968800 6969200 6969600 6968400 6968000