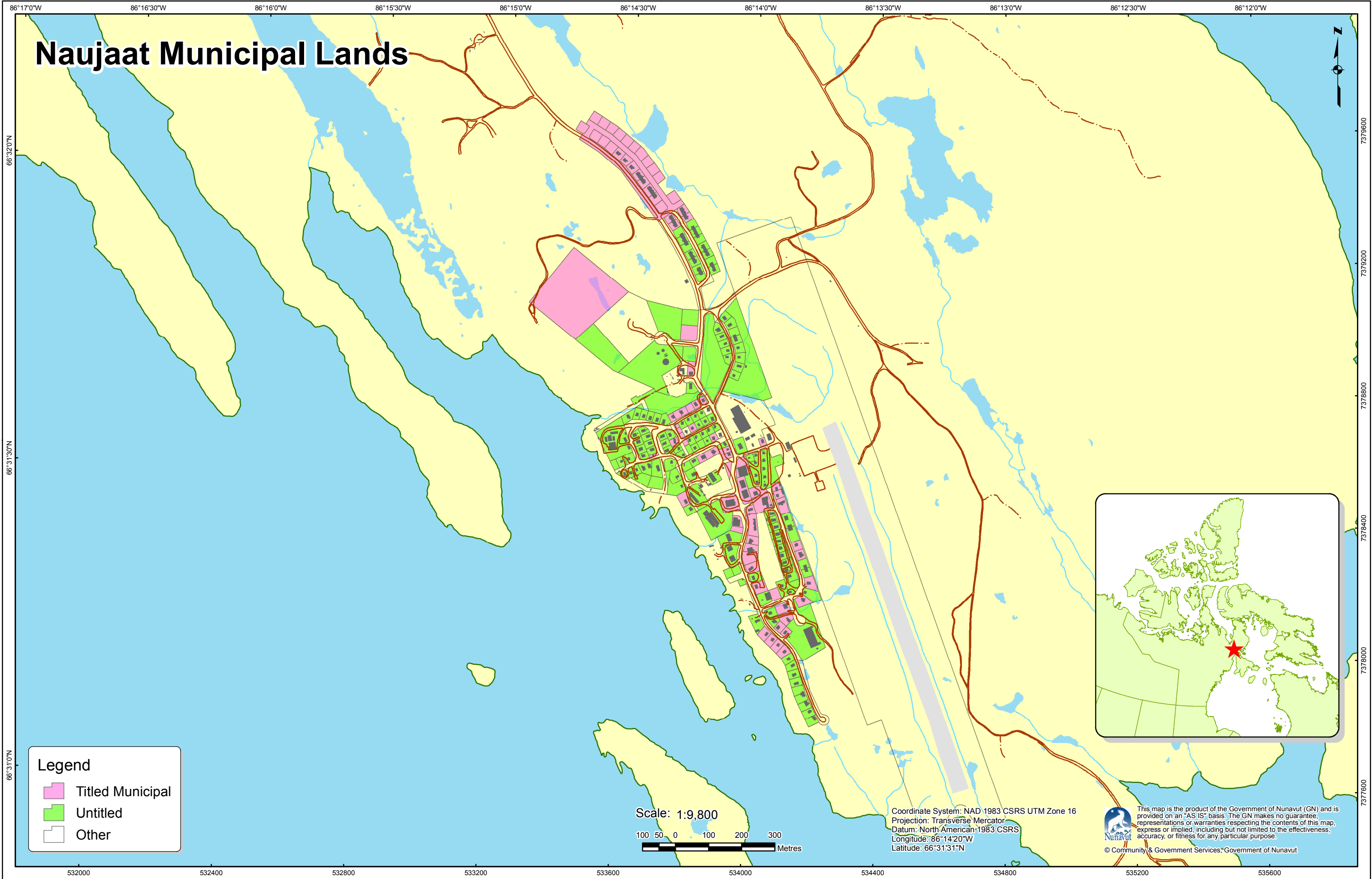


Naujaat Municipal Lands



86°17'0"W 86°16'30"W 86°16'0"W 86°15'30"W 86°15'0"W 86°14'30"W 86°14'0"W 86°13'30"W 86°13'0"W 86°12'30"W 86°12'0"W

66°32'0"N

66°31'30"N

66°31'0"N

7379600

7379200

7378800

7378400

7378000

7377600

Legend

- Titled Municipal
- Untitled
- Other

Scale: 1:9,800

100 50 0 100 200 300 Metres

Coordinate System: NAD 1983 CSRS UTM Zone 16
Projection: Transverse Mercator
Datum: North American 1983 CSRS
Longitude: 86°14'20"W
Latitude: 66°31'31"N



This map is the product of the Government of Nunavut (GN) and is provided on an "AS IS" basis. The GN makes no guarantee, representations or warranties respecting the contents of this map, express or implied, including but not limited to the effectiveness, accuracy, or fitness for any particular purpose.
© Community & Government Services, Government of Nunavut

532000 532400 532800 533200 533600 534000 534400 534800 535200 535600