

Resolute Bay Municipal Lands

The 100 Foot Strip is an illustration showing its approximate location.
Please contact your Planning and Land Administrator for more detailed information.

74°42'0"N

74°41'30"N

94°52'30"W

94°52'0"W

94°51'30"W

94°51'0"W

94°50'30"W

94°50'0"W

94°49'30"W

94°49'0"W

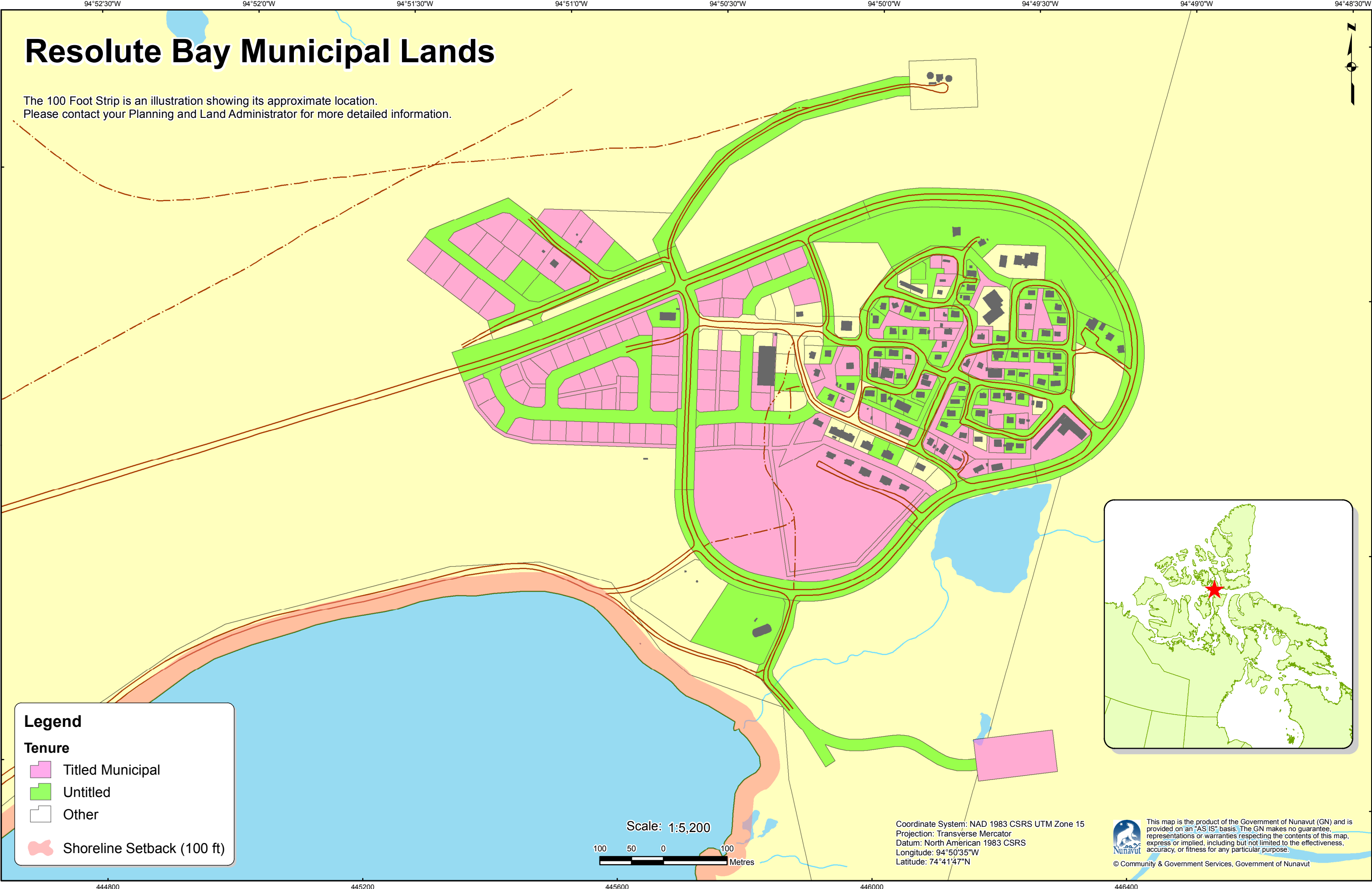
94°48'30"W

8291200

8290800





8290400

8290000



Legend

Tenure

-  Titled Municipal
-  Untitled
-  Other
-  Shoreline Setback (100 ft)

Scale: 1:5,200



Coordinate System: NAD 1983 CSRS UTM Zone 15
Projection: Transverse Mercator
Datum: North American 1983 CSRS
Longitude: 94°50'35"W
Latitude: 74°41'47"N



This map is the product of the Government of Nunavut (GN) and is provided on an "AS IS" basis. The GN makes no guarantee, representations or warranties respecting the contents of this map, express or implied, including but not limited to the effectiveness, accuracy, or fitness for any particular purpose.

© Community & Government Services, Government of Nunavut

444800

445200

445600

446000

446400